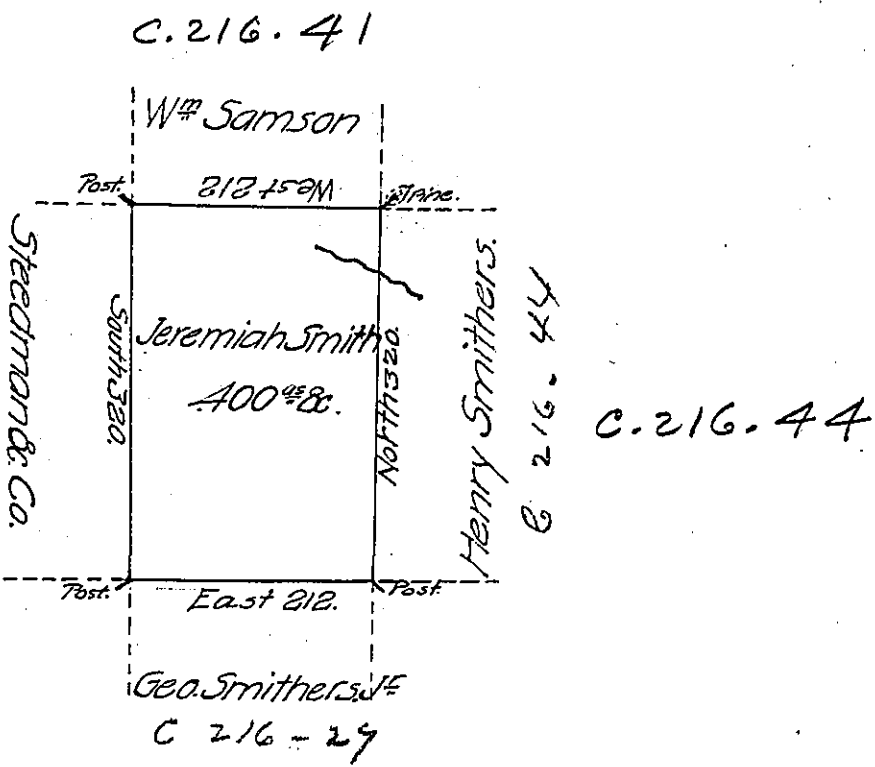


Foster -  
Luzerne



A Draft of a tract of land called — Situate Joining Land Surve<sup>d</sup>  
 for W<sup>m</sup> Sanson & others in the County of Northum<sup>d</sup> Containing  
 four hundred Acres & Allow<sup>es</sup> Surveyed for Jeremiah Smith  
 the 23<sup>d</sup> day of Sep<sup>r</sup> 1793 by Virtue of a Warrant dated the 2<sup>d</sup>  
 day of Aug<sup>t</sup> 1793.

by W<sup>m</sup> Gray D.S.

To Daniel Brodhead Esq<sup>r</sup> }  
 Surve<sup>r</sup> Gen<sup>l</sup> }

IN TESTIMONY that the above is a copy of the original remaining on file in  
 the Department of Internal Affairs of Pennsylvania, made  
 conformably to an Act of Assembly approved the 16th day of  
 February 1833, I have hereunto set my hand and caused  
 the Seal of said Department to be affixed at Harrisburg,  
 this Twenty first day of December 1906.

*Isaac R. Brown*  
 Secretary of Internal Affairs.